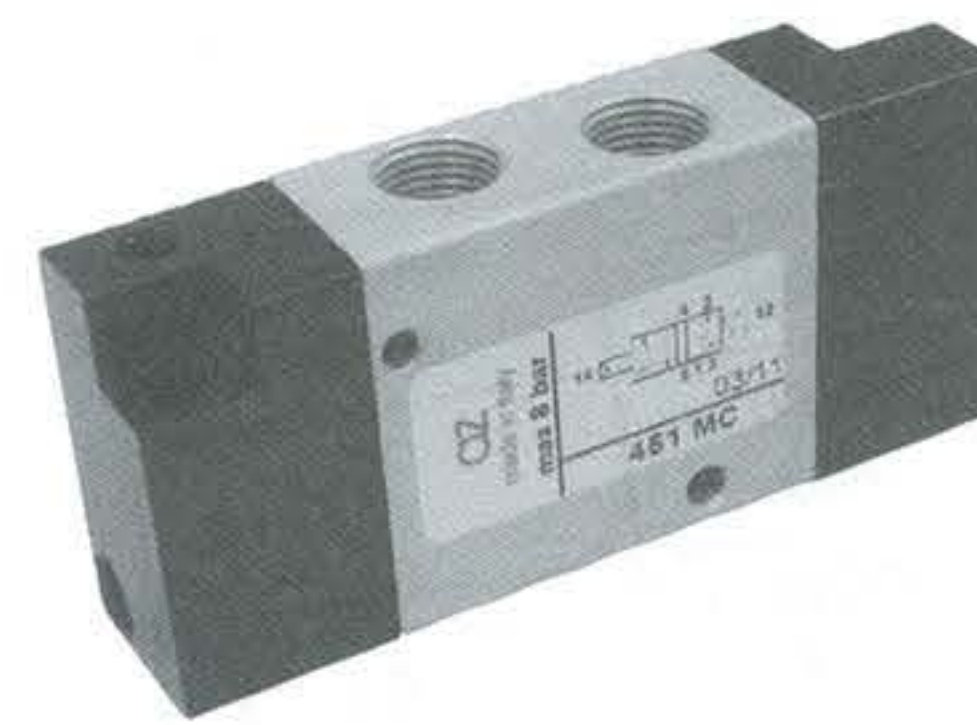


- Valvole a spola 5/2 con attacchi filettati G1/8" (scarichi M5)
5/2 spool valves with G1/8" threaded ports (M5 exhaust ports)
- Spessore della valvola: 16 mm
Valve thickness: 16 mm
- Montaggio in linea o su basi modulari (pag. 219-221)
Installation in-line or on multiple sub-bases (refer to pages 219-221)
- Azionamento pneumatico monostabile o bistabile
Mono-stable or bi-stable pneumatic pilot



| | | |
|--|---|-------------------------------|
| Diametro nominale <i>Nominal orifice</i> | 4 mm | |
| Portata nominale a 6 bar, Δp 1 bar <i>Nominal flow rate at 6 bar, Δp 1 bar</i> | 350 NI/min | |
| Temperatura di esercizio <i>Temperature range</i> | max +60°C | |
| Pressione di esercizio <i>Working pressure</i> | -0.9 ... 10 bar -0.09 ... 1 MPa | |
| Pressione di azionamento <i>Actuating pressure</i> | monostabile <i>[mono-stable]</i> | bistabile <i>[bi-stable]</i> |
| | 3 ... 10 bar 0.3 ... 1 MPa | 2 ... 10 bar 0.2 ... 1 MPa |
| Fluido <i>Fluid</i> | Aria filtrata 50 μ con o senza lubrificazione <i>50μ filtered, lubricated or non lubricated air</i> | |

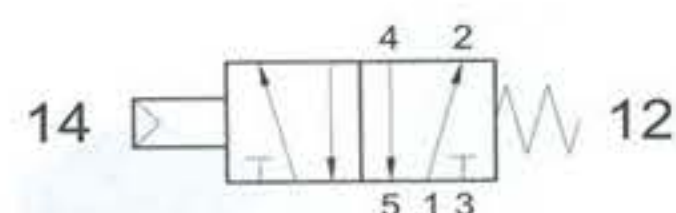
Materiali

Corpo: alluminio 11S
Molle: INOX
Guarnizioni: NBR
Spola: alluminio nichelato
Parti interne: ottone OT58

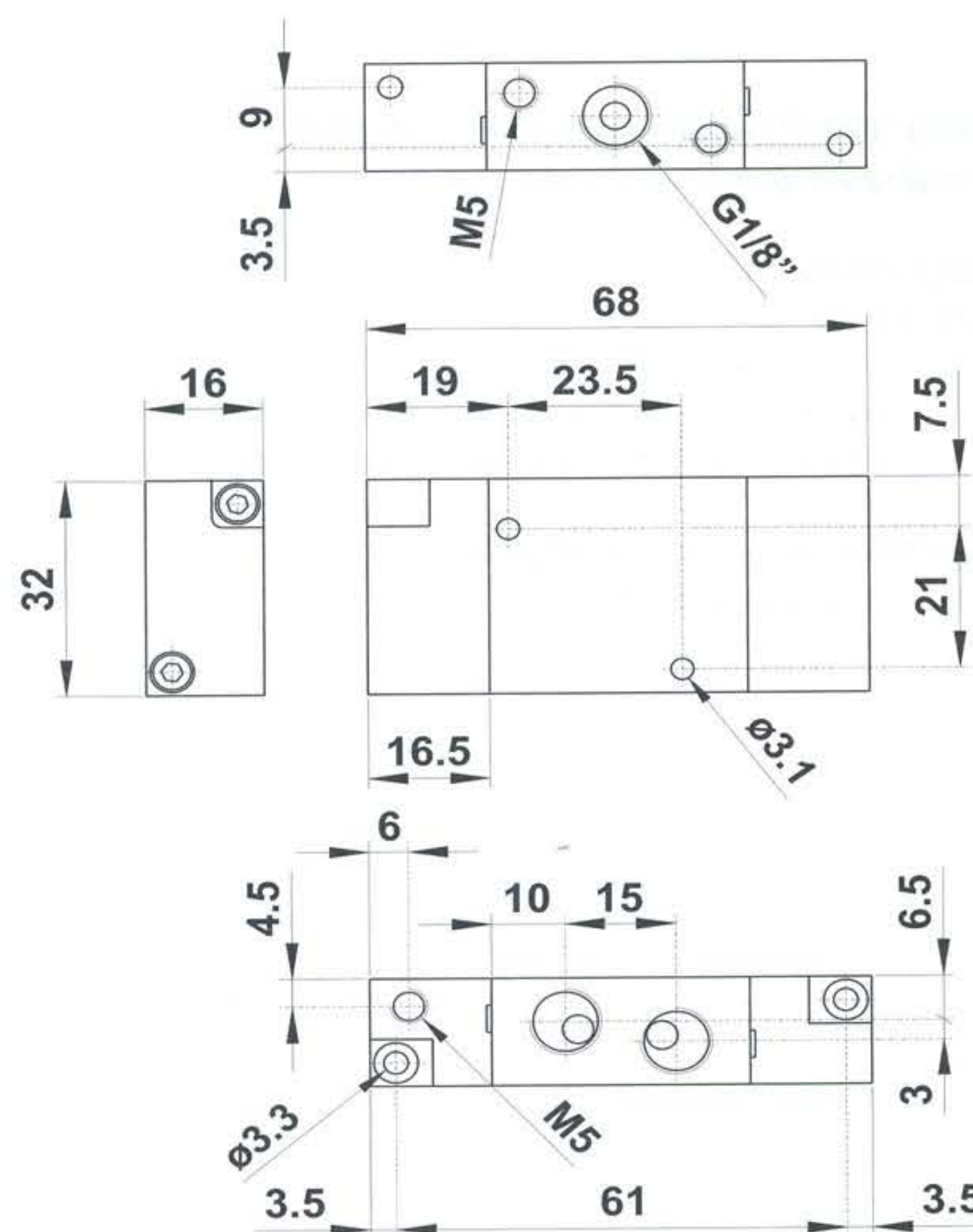
Materials

Body: aluminium 11S
Springs: stainless steel
Seals: NBR
Spool: nickel plated aluminium
Internal parts: brass OT58

451 MC

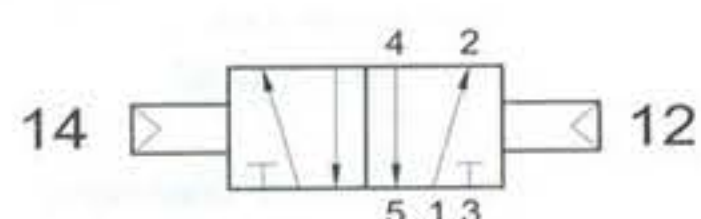


5/2 1/8" comando pneumatico - ritorno a molla
5/2 1/8" pneumatic pilot - spring return

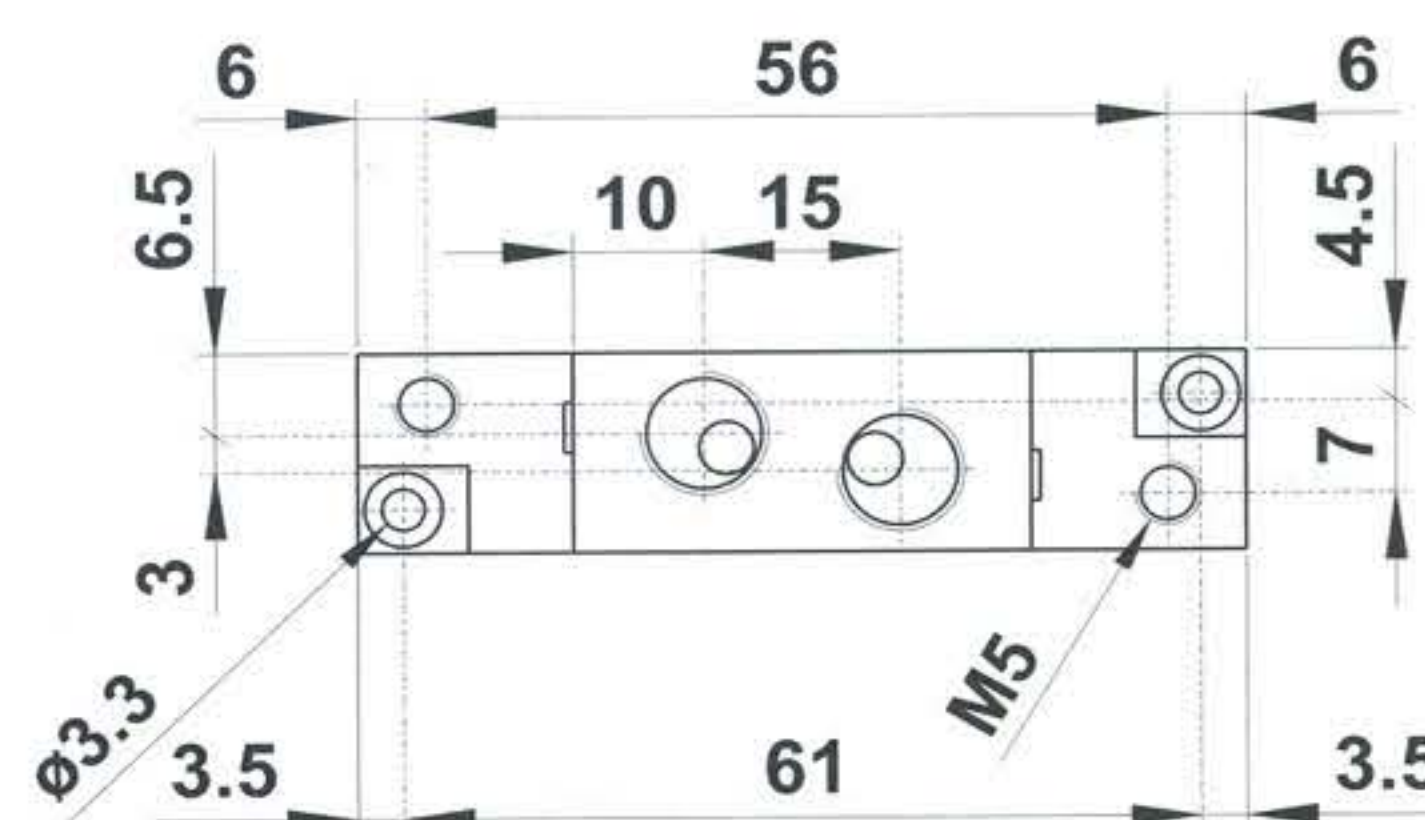


451 MC

451 CC

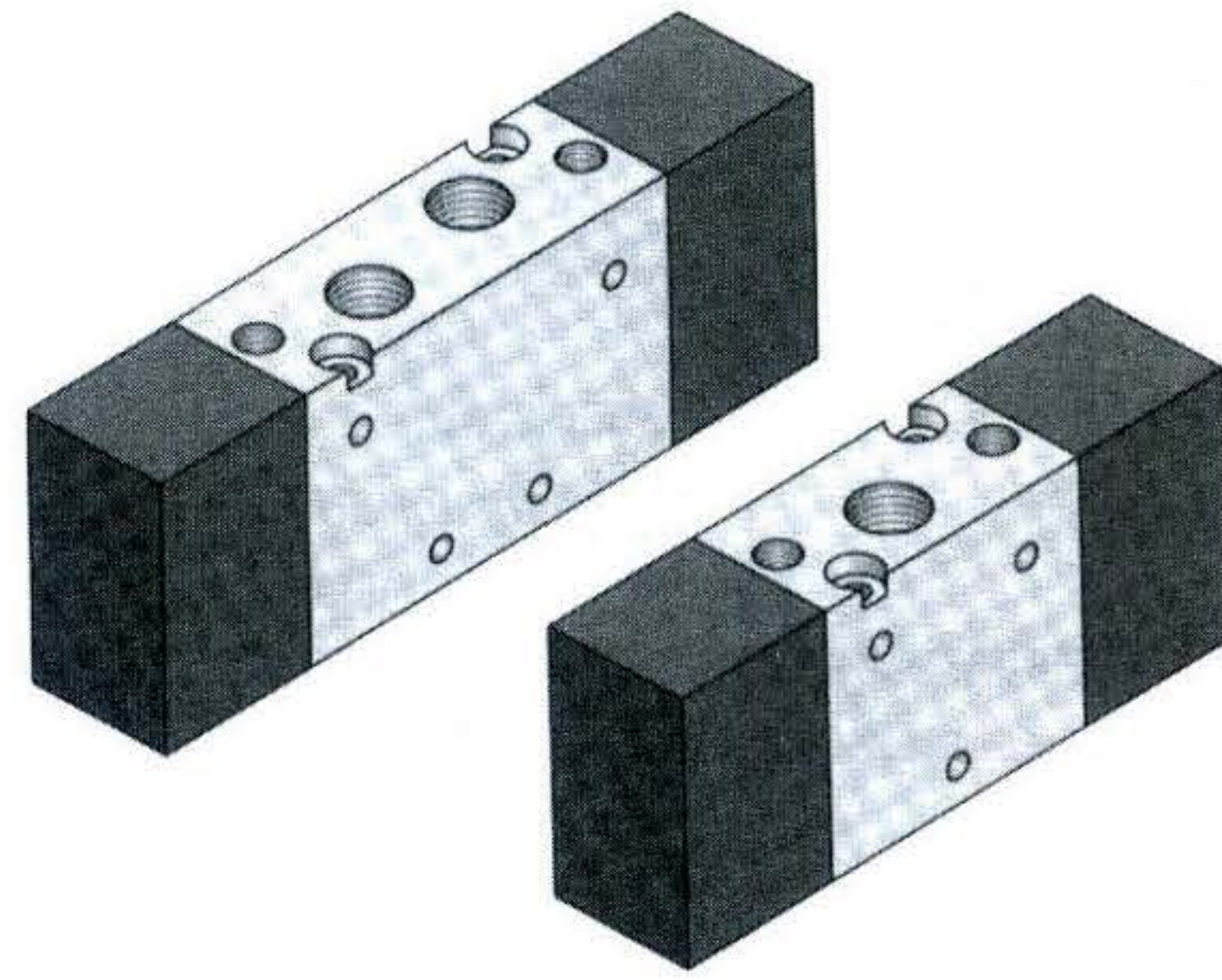


5/2 1/8" doppio comando pneumatico
5/2 1/8" double pneumatic pilot



451 CC

- Valvole a spola 3/2-5/2-5/3 con attacchi filettati G1/8"
3/2-5/2-5/3 spool valves with G1/8" threaded ports
- Spessore della valvola: 18 mm
Valve thickness: 18 mm
- Montaggio in linea, su basi modulari o a posti fissi
Installation in-line, on multiple sub-bases or manifolds
- Azionamento pneumatico monostabile o bistabile
Mono-stable or bi-stable pneumatic pilot



Tempi di risposta/response times

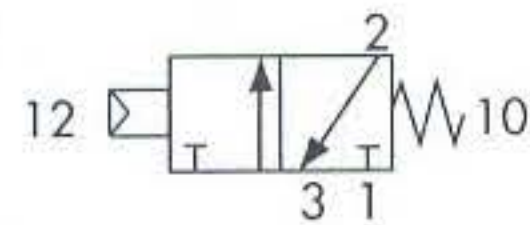
| | | | |
|--|----------------------------------|--|----------------------------------|
| monostabile <i>mono - stable</i> | TRA (14): 4 ms TRR (12): 8 ms | bistabile <i>bi - stable</i> | TRA (14): 4 ms TRR (12): 4 ms |
|--|----------------------------------|--|----------------------------------|

| | | |
|---|---|-------------------------------|
| Diametro nominale <i>Nominal orifice</i> | 4.5 mm | |
| Portata nominale a 6 bar, Δp 1 bar <i>Nominal flow rate at 6 bar, Δp 1 bar</i> | 500 NI/min | |
| Temperatura di esercizio <i>Temperature range</i> | max + 60°C | |
| Pressione di esercizio <i>Working pressure</i> | max 10 bar max 1 MPa | |
| | <i>monostabile (mono-stable)</i> | <i>bistabile (bi-stable)</i> |
| Pressione di azionamento <i>Actuating pressure</i> | 2.5 ... 10 bar 0.25 ... 1 MPa | 1 ... 10 bar 0.1 ... 1 MPa |
| Fluido <i>Fluid</i> | Aria filtrata 50μ con o senza lubrificazione <i>50μ filtered, lubricated or non lubricated air</i> | |

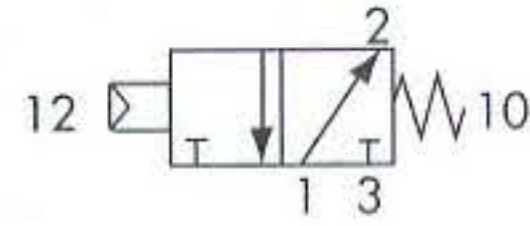
Materiali
Corpo: alluminio 11S
Molla: INOX
Guarnizioni: NBR
Spola: INOX
Parti interne: ottone OT58

Materials
Body: aluminium 11S
Spring: stainless steel
Seals: NBR
Spool: stainless steel
Internal parts: brass OT58

731 MC normalmente chiusa
normally closed

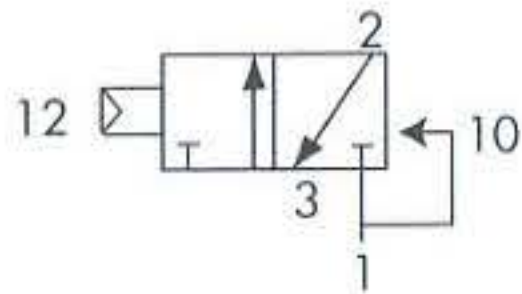


731 MCA normalmente aperta
normally open

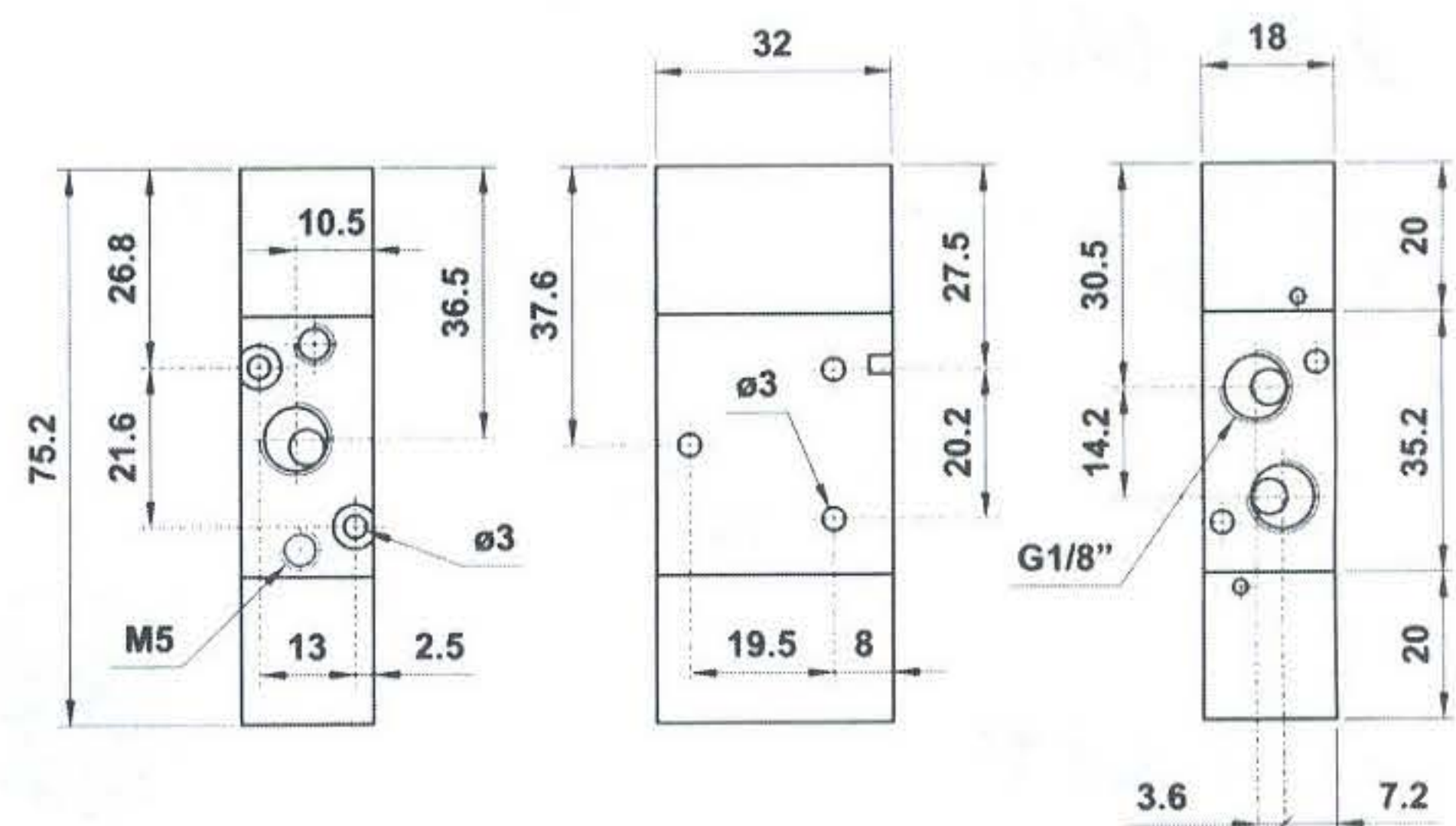


5/3 1/8" doppio comando pneumatico
5/3 1/8" double pneumatic pilot

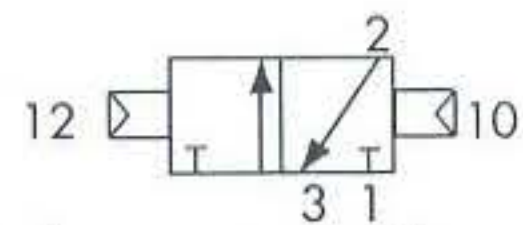
731 CFP



3/2 1/8" NC comando pneumatico - ritorno a molla pneumatica
3/2 1/8" NC pneumatic pilot - pneumatic spring return

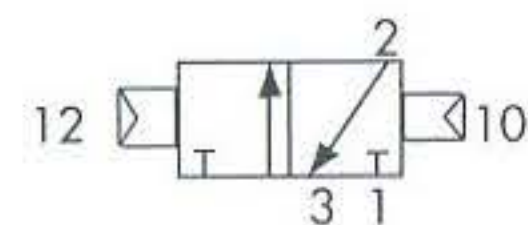


731 CC

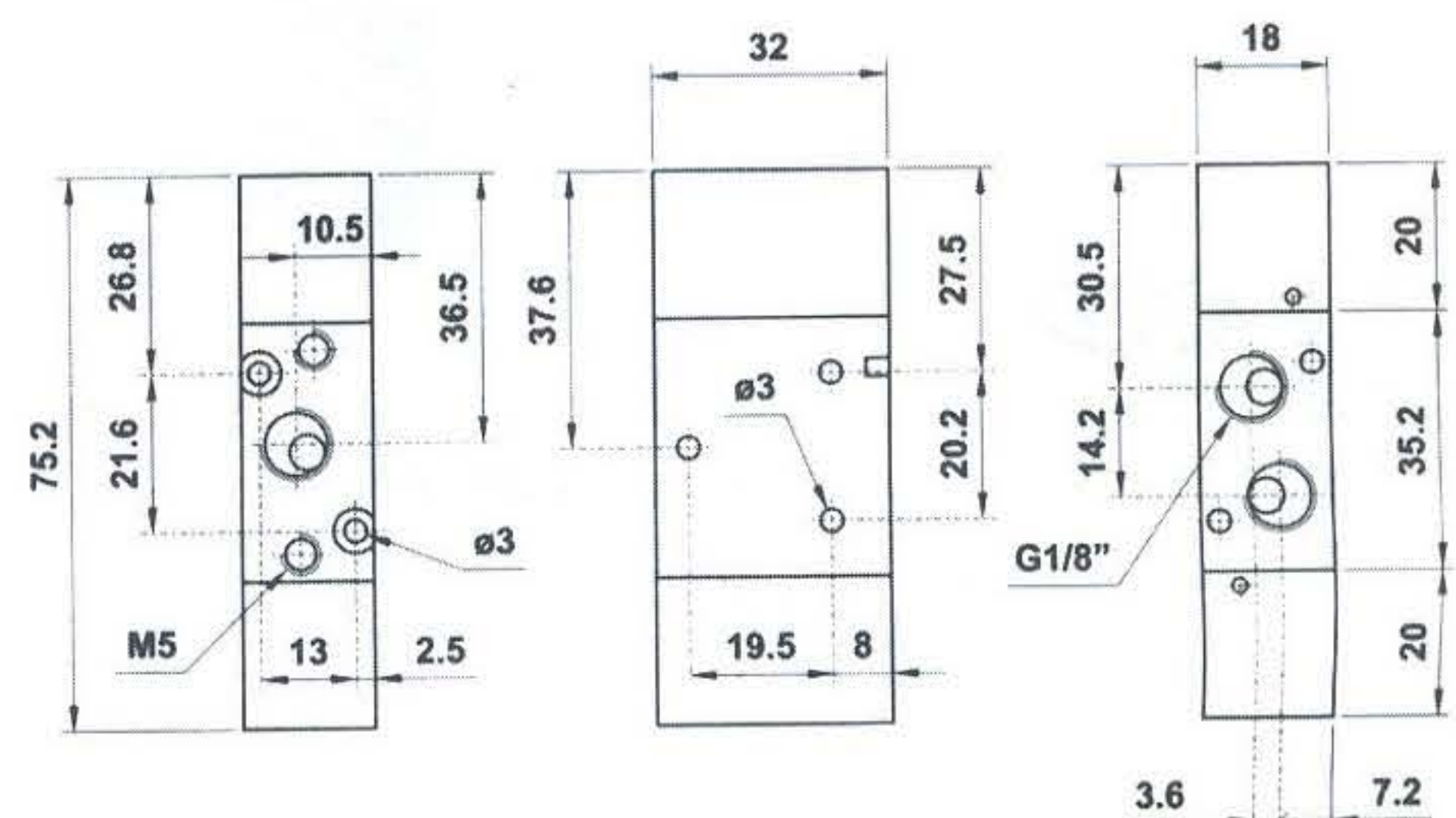


3/2 1/8" doppio comando pneumatico
5/2 1/8" double pneumatic pilot

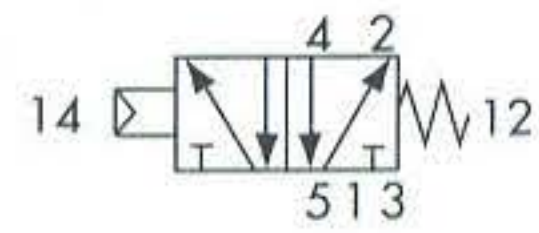
731 CCD



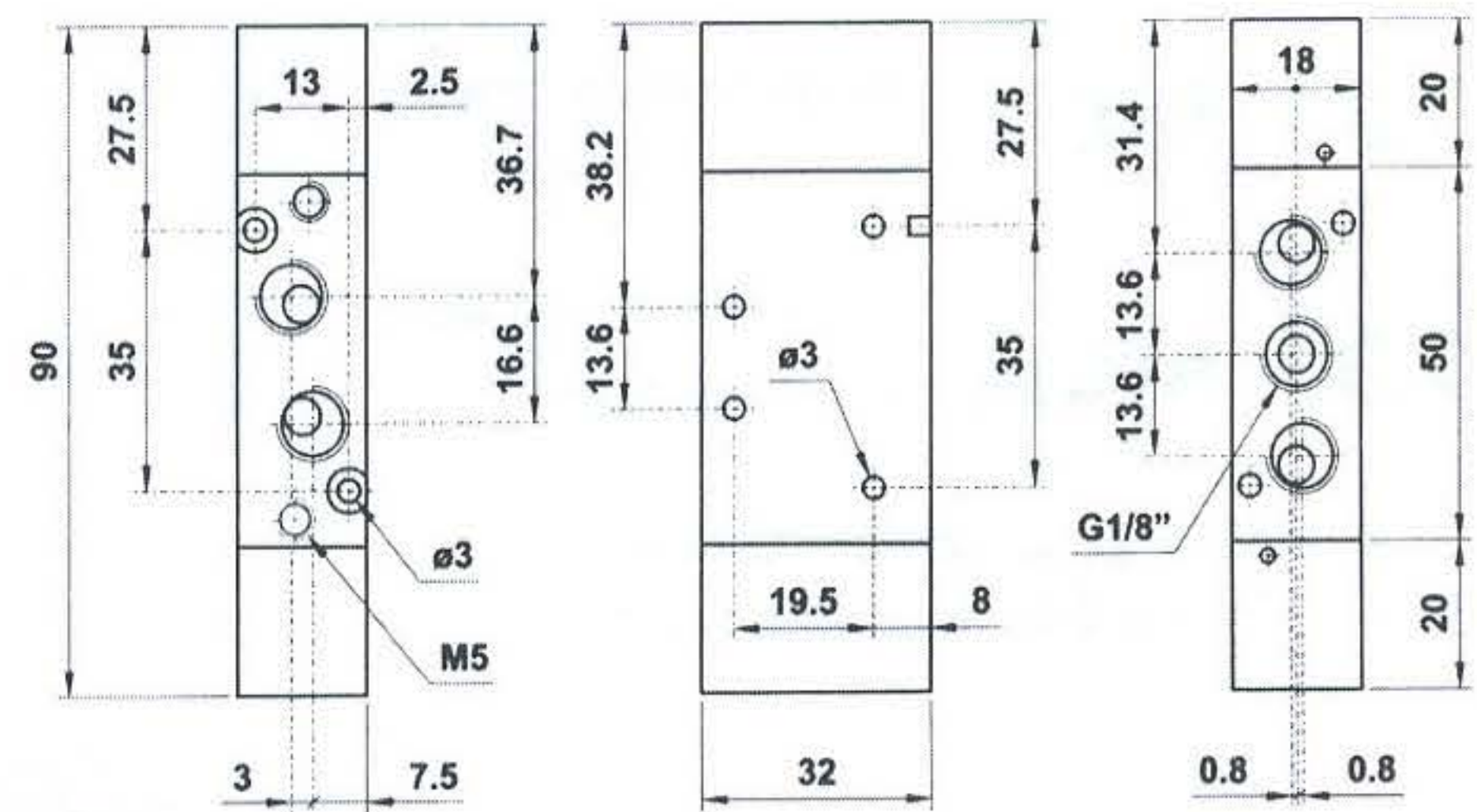
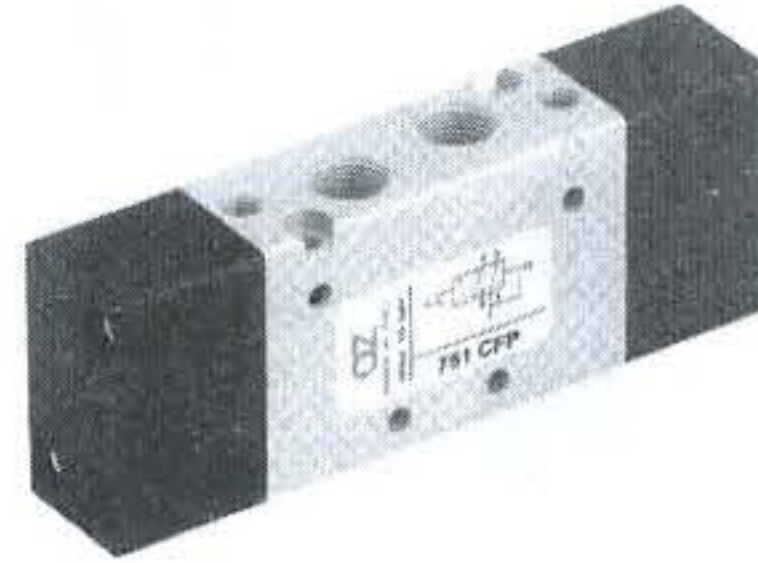
3/2 1/8" doppio comando pneumatico - con differenziale
5/2 1/8" double pneumatic pilot - with differential



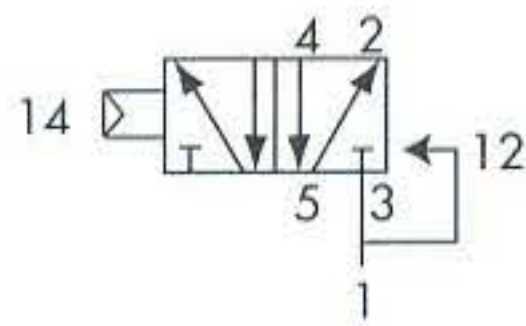
751 MC



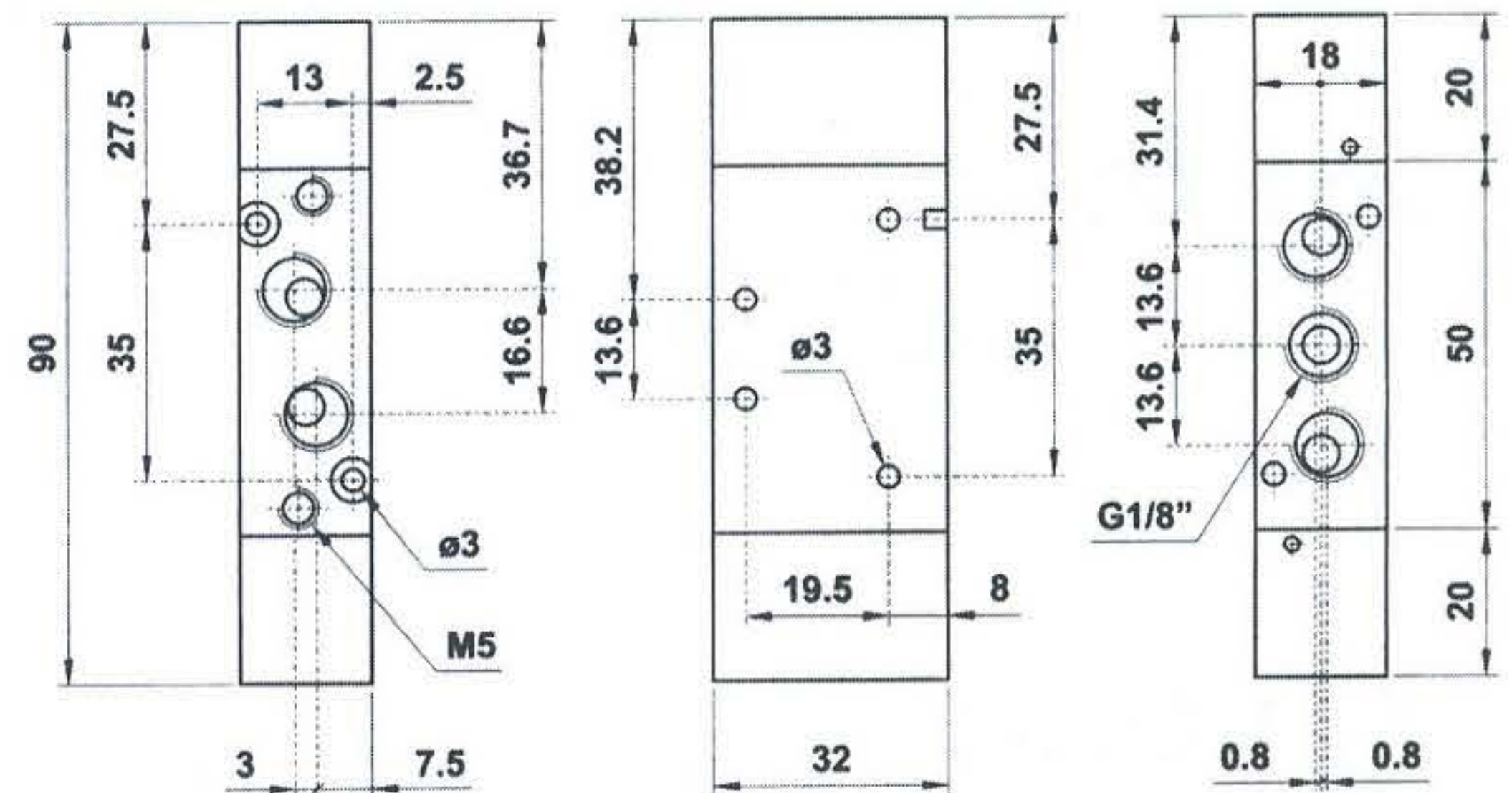
5/2 1/8" comando pneumatico - ritorno a molla
5/2 1/8" *pneumatic pilot - spring return*



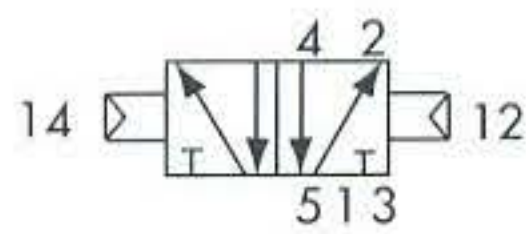
751 CFP



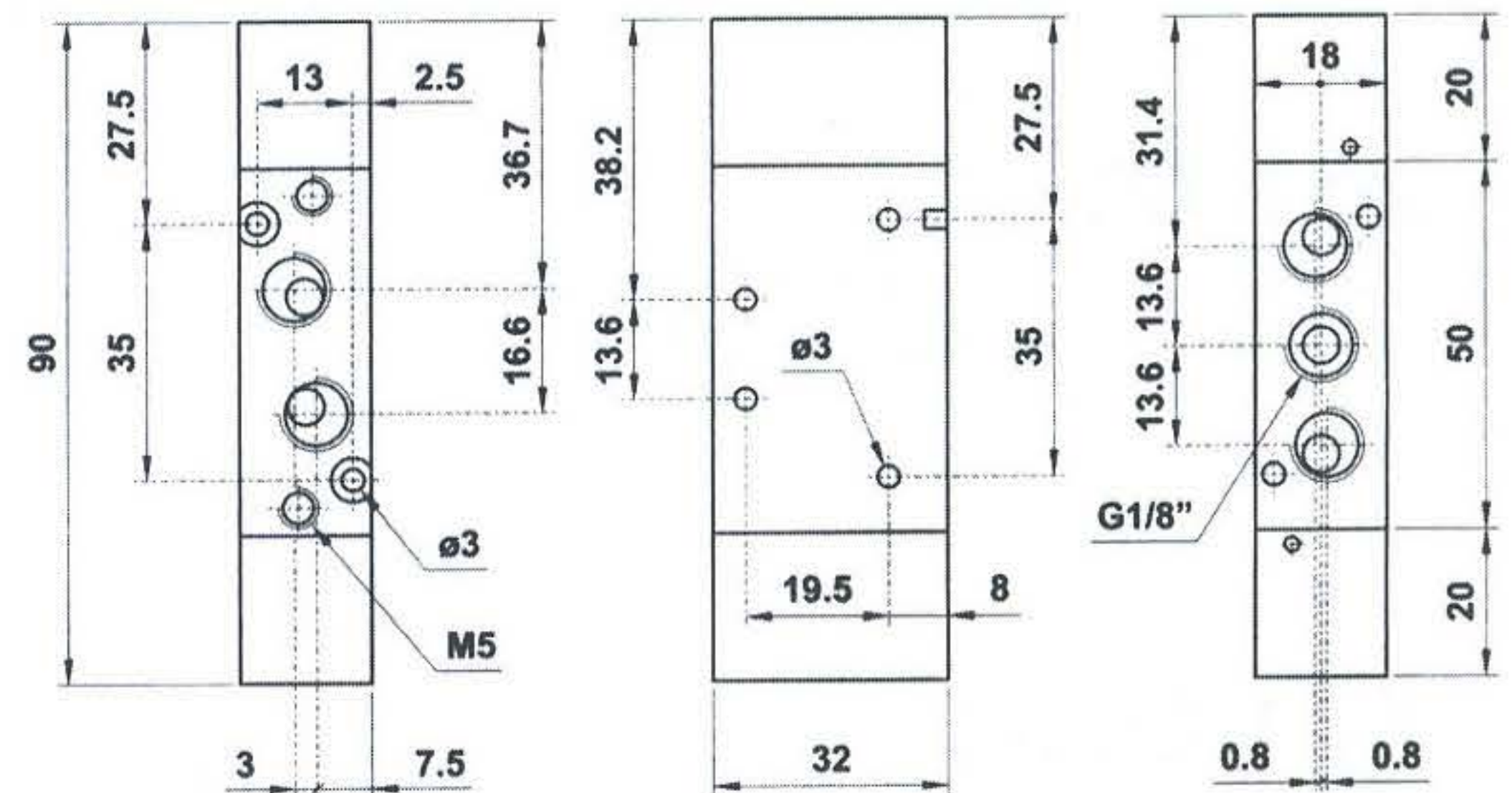
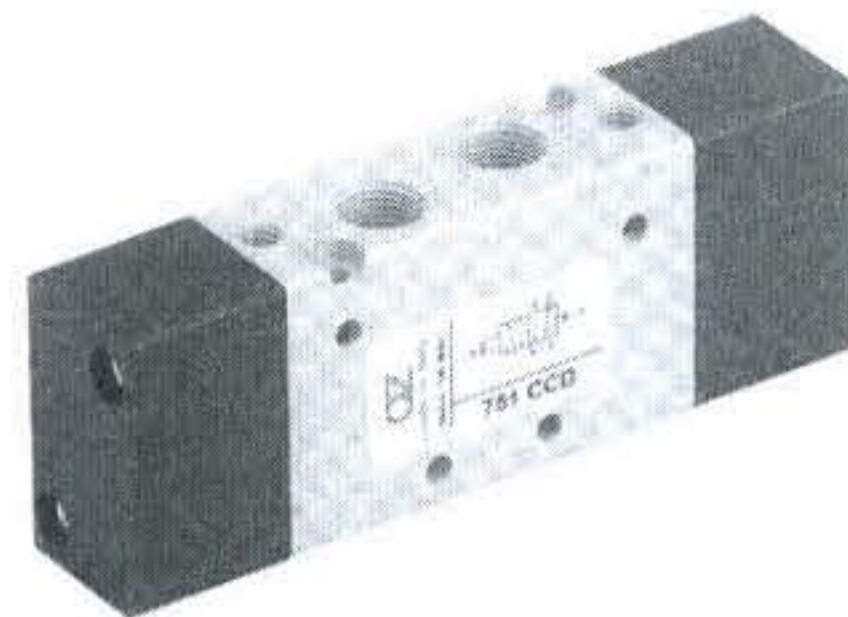
5/2 1/8" comando pneumatico - ritorno a molla pneumatica
5/2 1/8" *pneumatic pilot - pneumatic spring return*



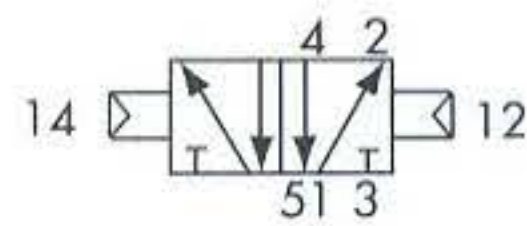
751 CC



5/2 1/8" doppio comando pneumatico
5/2 1/8" *double pneumatic pilot*



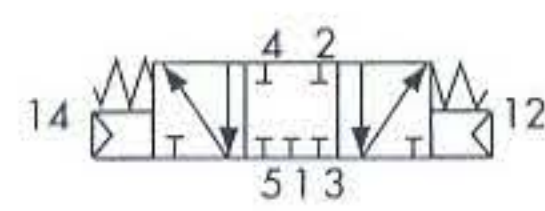
751 CCD



5/2 1/8" doppio comando pneumatico - con differenziale
5/2 1/8" *double pneumatic pilot - with differential*

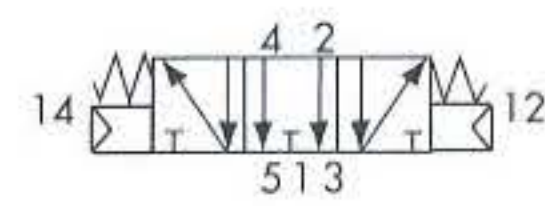
7513C CC

centri chiusi
closed centres



7513A CC

centri aperti
open centres



5/3 1/8" doppio comando pneumatico
5/3 1/8" *double pneumatic pilot*

